



**REGIONAL SPECIALISED METEOROLOGICAL CENTRE-TROPICAL CYCLONES, NEW DELHI
TROPICAL WEATHER OUTLOOK**

DEMS-RSMC SPECIAL TROPICAL CYCLONES NEW DELHI DATED 08.07.2022

TROPICAL WEATHER OUTLOOK FOR NORTH INDIAN OCEAN (THE BAY OF BENGAL AND ARABIAN SEA) VALID FOR NEXT 120 HOURS ISSUED AT 0600 UTC OF 08.07.2022 BASED ON 0300 UTC OF 08.07.2022.

BAY OF BENGAL:

YESTERDAYS, CYCLONIC CIRCULATION OVER NORTHWEST & ADJOINING WESTCENTRAL BAY OF BENGAL OFF SOUTH ODISHA- NORTH ANDHRA PRADESH COASTS PERSISTED OVER THE SAME REGION AT 0300 UTC OF TODAY, THE 8TH JULY, 2022.

SCATTERED TO BROKEN LOW AND MEDIUM CLOUDS WITH EMBEDDED INTENSE TO VERY INTENSE CONVECTION LAY OVER WESTCENTRAL BAY OF BENGAL OFF ANDHRA PRADESH COAST, EASTCENTRAL & SOUTHEAST BAY OF BENGAL AND ANDAMAN SEA. SCATTERED LOW AND MEDIUM CLOUDS WITH EMBEDDED MODERATE TO INTENSE CONVECTION LAY OVER REST PARTS OF BAY OF BENGAL, ARAKAN COAST, GULF OF MARTABAN & TENASSERIM COAST.

PROBABILITY OF CYCLOGENESIS (FORMATION OF DEPRESSION) DURING NEXT 120 HRS:

24 HOURS	24-48 HOURS	48-72 HOURS	72-96 HOURS	96-120 HOURS
NIL	NIL	NIL	NIL	NIL

ARABIAN SEA:

YESTERDAYS, WELL MARKED LOW PRESSURE AREA OVER SOUTH PAKISTAN & NEIGHBOURHOOD WEAKENED INTO A LOW PRESSURE AREA SOUTH PAKISTAN & ADJOINING KUTCH REGION AT 0000 UTC OF TODAY, THE 08TH JULY, 2022. IT BECAME LESS MARKED OVER THE SAME REGION AT 0300 UTC OF TODAY THE, 08TH JULY, 2022.

SCATTERED TO BROKEN LOW AND MEDIUM CLOUDS WITH EMBEDDED INTENSE TO VERY INTENSE CONVECTION LAY OVER NORTHEAST ARABIAN SEA AND GULF OF KUTCH. SCATTERED TO BROKEN LOW AND MEDIUM CLOUDS WITH EMBEDDED MODERATE TO INTENSE CONVECTION LAY OVER GULF OF CAMBAY, EASTCENTRAL & SOUTHEAST ARABIAN SEA, LAKSHADWEEP ISLANDS AREA AND COMORIN AREA. SCATTERED LOW AND MEDIUM CLOUDS WITH EMBEDDED WEAK TO MODERATE CONVECTION LAY OVER WESTCENTRAL & NORTHWEST ARABIAN SEA.

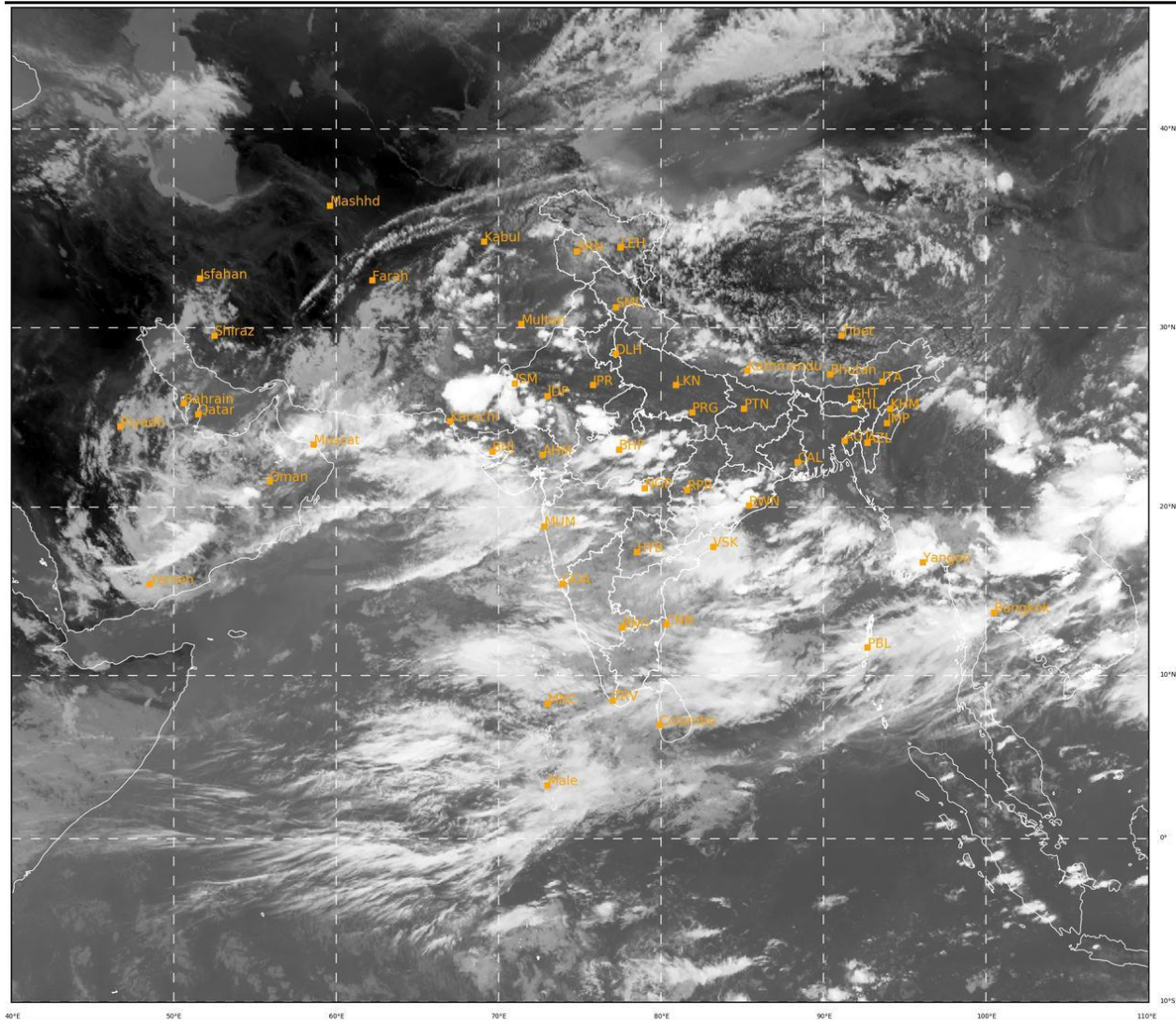
PROBABILITY OF CYCLOGENESIS (FORMATION OF DEPRESSION) DURING NEXT 120 HRS:

24 HOURS	24-48 HOURS	48-72 HOURS	72-96 HOURS	96-120 HOURS
NIL	NIL	NIL	NIL	NIL

REMARKS: NIL

SAT : INSAT-3D IMG
IMG_TIR1 10.8 um
L1C Mercator

07-07-2022/(0930 to 0956) GMT
07-07-2022/(1500 to 1526) IST



270

952

IMD, DELHI

Cloud distribution: (a) Isolated: <25%, Scattered:25-50%, Broken: 51-75%, Solid:>75%, Convection Intensity: (a) Weak: Cloud Top Temperature (CTT) >-25°C, (b) Moderate: CTT: - 25°C to -40°C, (c) Intense: CTT: - 41°C to -70°C and (d) Very Intense: : Less than -70°C
PROBABILITY OF CYCLOGENESIS (FORMATION OF DEPRESSION): NIL: 0%, LOW: 1-33%, , MODERATE: 34-66% AND HIGH: 67-100%
This is a guidance Bulletin for WMO/ESCAP Panel Member countries. Visit respective National websites for Country specific Bulletins